



人工

The

Shanghai AI

智能

Lectures

上海

授课



The Shanghai Lectures 2022

Natural and Artificial Intelligence in Embodied Physical Agents

November 10th, 2022

From Zagreb, Croatia

Today's program (CET)

08:30 sites begin connecting

08:55 all sites are ready

09:00 (Fabio) Welcome

09:05 The Role of Embodiment in Intelligent Systems vs. Practical Robotics in 2022

10:00 Break

10:10 Guest Lecture by Enrica Zereik, CNR-INM and Heron@CNR Joint Lab, Genoa, Italy:

Controlling 'uncontrollable' stuff: Playing with the H2Arm

11:00 Wrap-up

Today's Guest Lecture

10:10 CET Enrica Zereik, CNR-INM and Heron@CNR Joint Lab, Genoa, Italy

**«Controlling 'uncontrollable' stuff:
Playing with the H2Arm»**

Stay tuned!



Lecture 2

The Role of Embodiment in Intelligent Systems vs. Practical Robotics in 2022

Fabio Bonsignorio
Professor, ERA CHAIR in AI for Robotics



University of Zagreb
Faculty of Electrical Engineering and Computing
Laboratory for Autonomous Systems and Mobile Robotics



This project has received funding
from the European Union's
Horizon 2020 research and
innovation programme under the
Grant Agreement No. 952275



www.heronrobots.com

Today's topics

- **Practical Robotics in 2022**
- **The classical approach: Cognition as computation**
- **Successes and failures of the classical approach**
- **Some problems of the classical approach**
- **The need for an embodied approach**

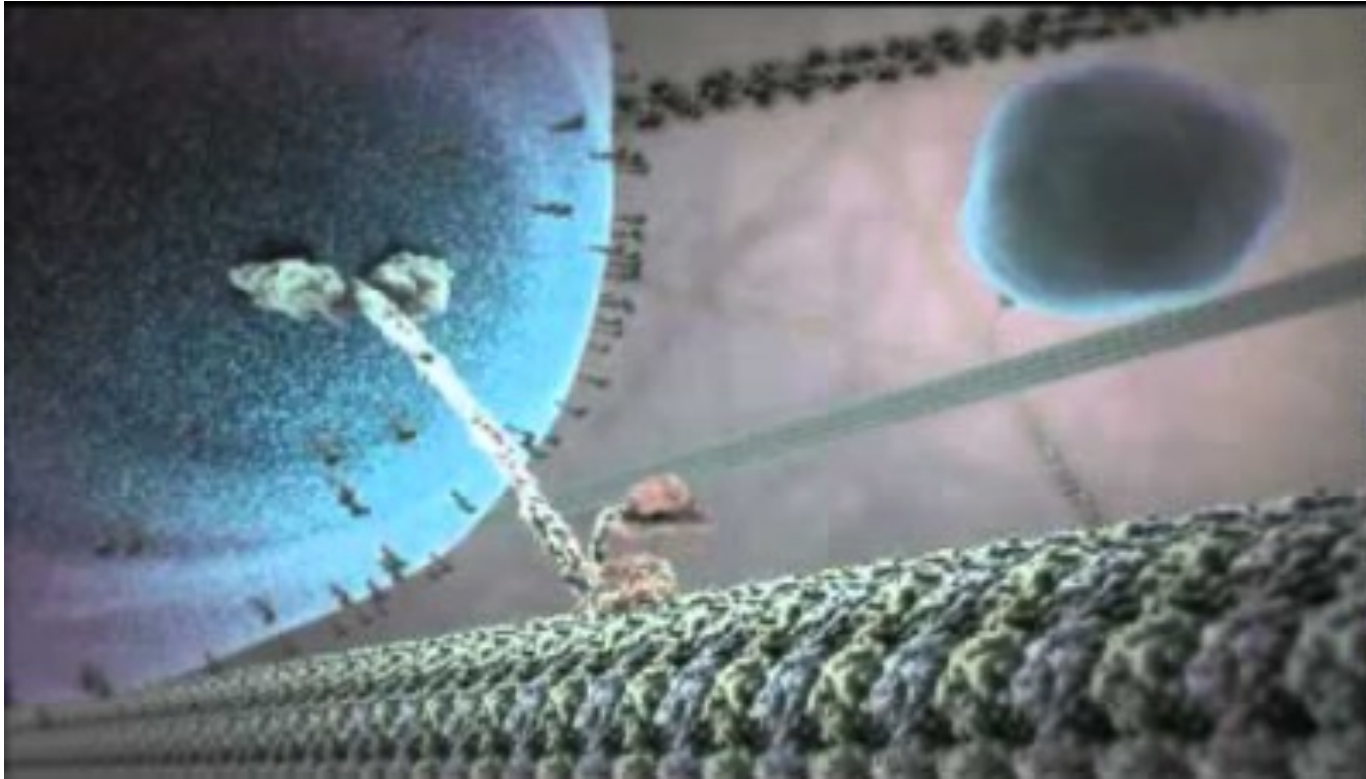
Today's topics

- **Practical Robotics in 2022**
- The classical approach: Cognition as computation
- Successes and failures of the classical approach
- Some problems of the classical approach
- The need for an embodied approach

Issues to think about: an unfair comparison



Issues to think about: an unfair comparison



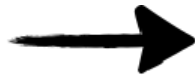
The synthetic methodology

Slogan:

“Understanding by building”

modeling behavior of interest

abstraction of principles

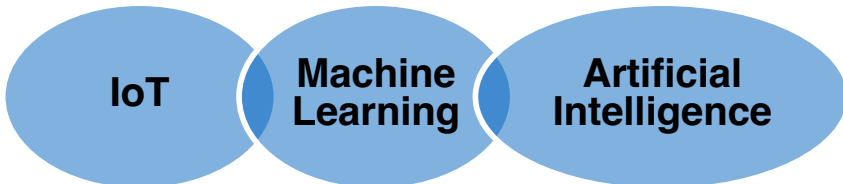
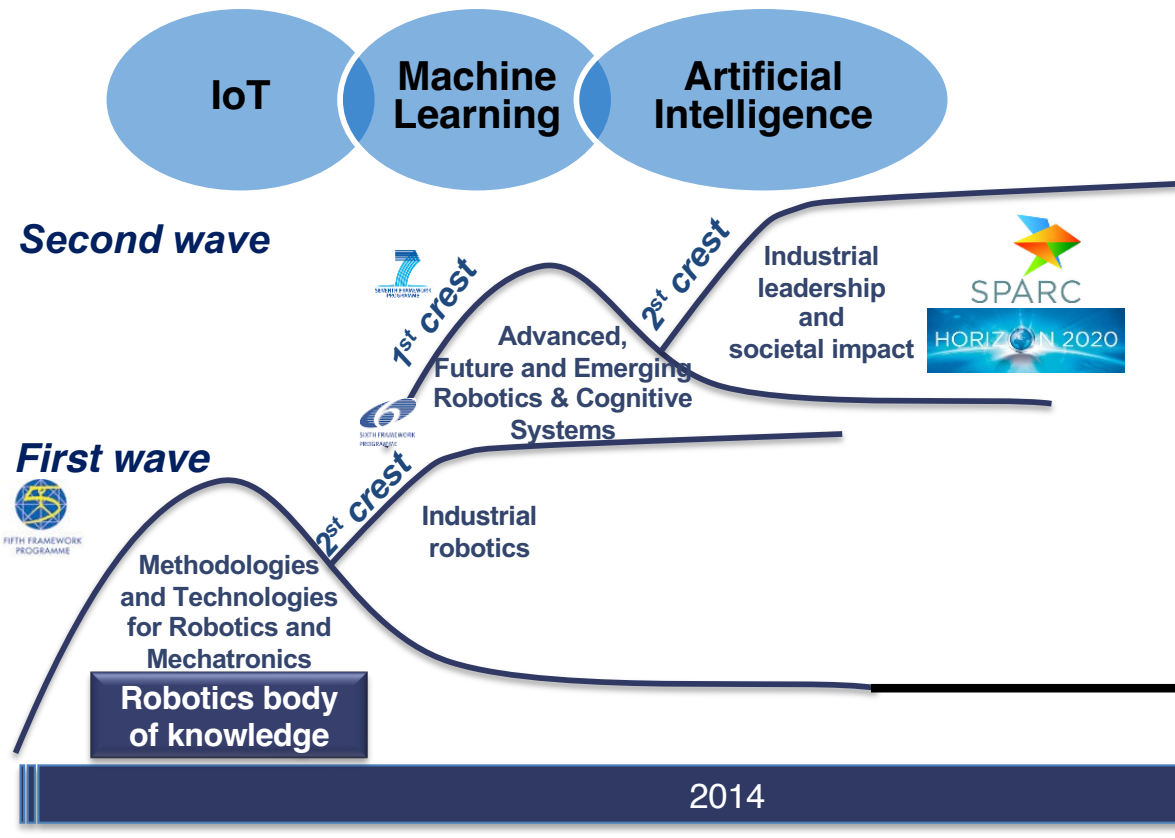


**robots as tools for scientific
investigation**

Many examples during ShanghAI lectures

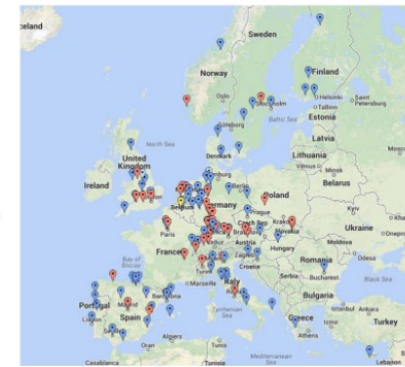
The second wave

we are here!



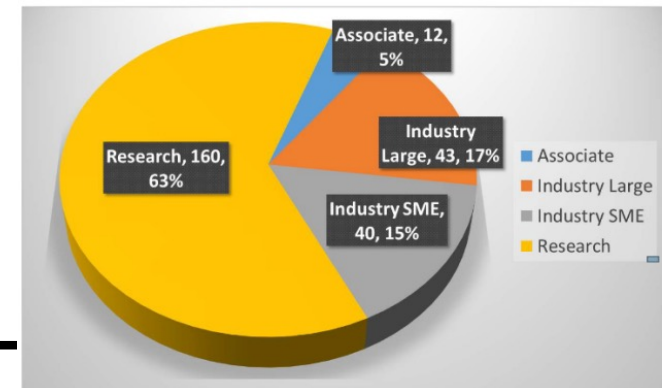
Membership development

280 member organisations



Legend:

- Industry
- Research
- Associate
- euRobotics AISBL



Important Remark

We need a lot of code and system engineering even for simple tasks.....

How to reduce the effort?



Robot Operating System (ros.org)

From Opensource Robotics Foundation (formerly from Willow Garage)
(openrobotics.org)

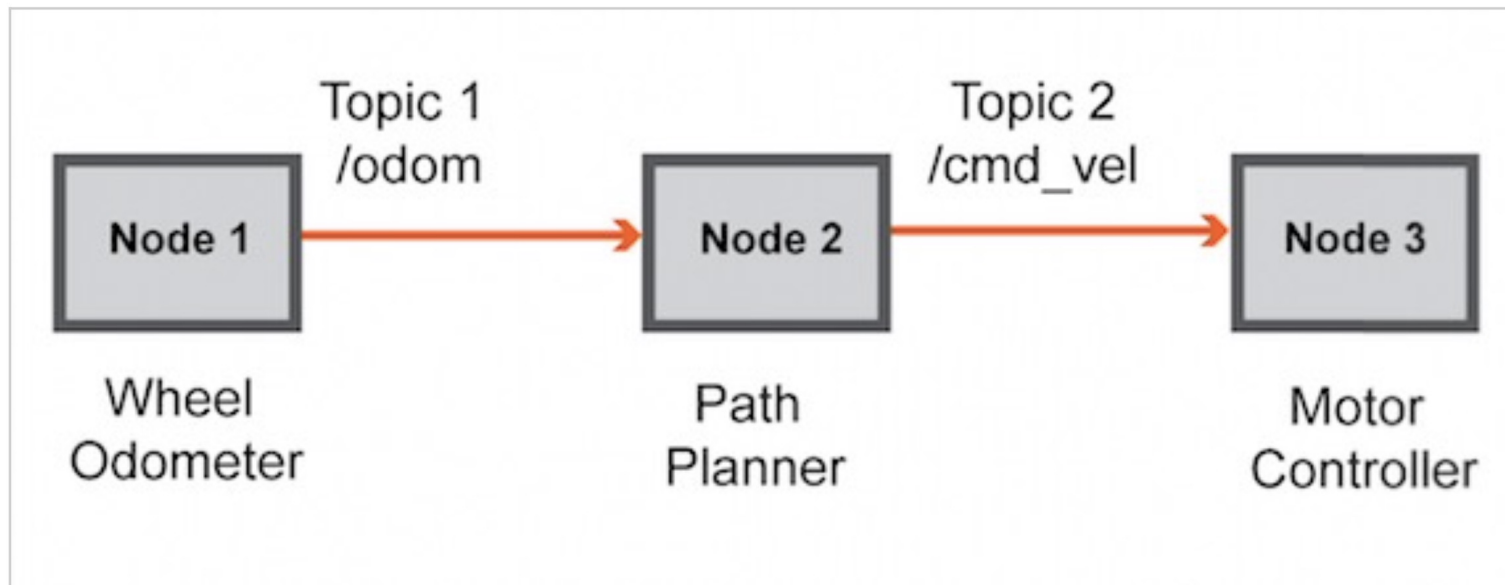


- ROS is a 'middleware' (a layer in between the OS and your robot application specific system software)
- It provides messages passing between processes, code, libraries organized into 'packages' (filled with Python and C++ code mainly), to implement as 'blackboxes' miryads of complex function to perform a wide range of tasks (including the examples we have seen before)



- ROS is a network distributed system relaying on tcp-ip where processes, called nodes, are responsible for individual sets of tasks. Nodes communicate with each other using messages passing via logical channels called topics. Each node can send or get data from other nodes using a publish/subscribe model. r.
- ROS allows massive code reuse in robotics research and development and is perfect for rapid prototyping of new systems and applications, in particular where efficiency is not a main constraint (although being rather cumbersome and inefficient and having a steep learning curve, you will see 😊).
- You can add your own code packages

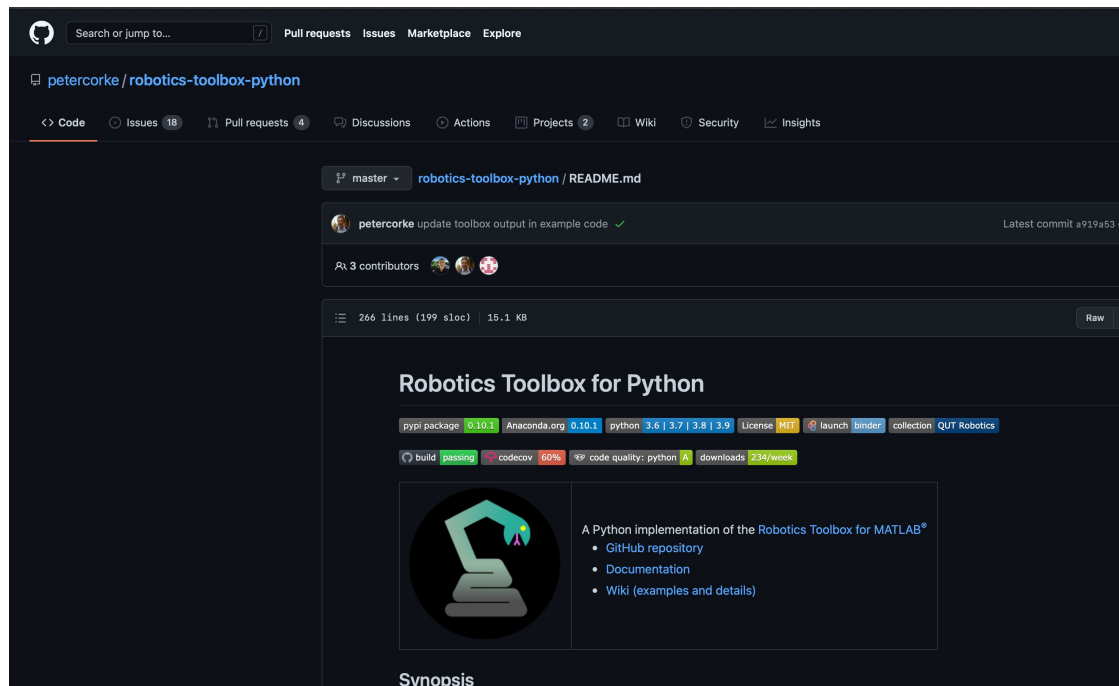
ROS



Nodes and topics. Image adapted from a [tutorial](#) from [Justin Huang](#).

And easier toolboxes

- Matlab Robotics Toolbox, see Mathworks Matlab doc
- Python Robotics Toolbox (still in development), see <https://github.com/petercorke/robotics-toolbox-python/blob/master/README.md>



The screenshot displays the GitHub interface for the repository `petercorke/robotics-toolbox-python`. The page shows the `README.md` file for the `master` branch. A recent commit by `petercorke` is visible, titled "update toolbox output in example code". The repository has 3 contributors and 18 issues. The README content includes the title "Robotics Toolbox for Python" and a list of supported environments: `pip` package 0.10.1, Anaconda.org 0.10.1, and Python versions 3.6, 3.7, 3.8, and 3.9. It also lists the MIT license, launch/binder integration, and QUT Robotics collection. A build status shows "passing", codecov coverage at 60%, and 234 weekly downloads. The synopsis section features a logo of a robotic arm and describes it as a Python implementation of the Robotics Toolbox for MATLAB, with links to the GitHub repository, documentation, and a wiki.

Search or jump to... Pull requests Issues Marketplace Explore

petercorke / robotics-toolbox-python

< Code Issues 18 Pull requests 4 Discussions Actions Projects 2 Wiki Security Insights

master robotics-toolbox-python / README.md

petercorke update toolbox output in example code ✓ Latest commit a919a53 on


3 contributors

266 lines (199 sloc) 15.1 KB Raw

Robotics Toolbox for Python

pip package 0.10.1 Anaconda.org 0.10.1 python 3.6 | 3.7 | 3.8 | 3.9 License MIT launch binder collection QUT Robotics

build passing codecov 60% code quality: python downloads 234/week



A Python implementation of the Robotics Toolbox for MATLAB®

- GitHub repository
- Documentation
- Wiki (examples and details)

Synopsis



1) <http://wiki.ros.org/turtlebot/Tutorials/indigo/Turtlebot%20Installation>

2) http://wiki.ros.org/turtlebot_gazebo/Tutorials/indigo/Gazebo%20Bringup%20Guide

[Robots/ TurtleBot](#)

TurtleBot

Original TurtleBot (Discontinued)



TurtleBot 2 Family



TurtleBot 2



TurtleBot 2i



TurtleBot 2e

TurtleBot 3 Family

Burger



Waffle



Waffle Pi



ROS 2 Documentation

The ROS Wiki is for ROS 1. Are you using ROS 2 (Dashing/Foxy/Rolling)? [Check out the ROS 2 Documentation](#)

Wiki

- [Distributions](#)
- [ROS/Installation](#)
- [ROS/Tutorials](#)
- [RecentChanges](#)
- [Robots/TurtleBot](#)

Page

- [Immutable Page](#)
- [Info](#)
- [Attachments](#)

More Actions:

User

- [Login](#)

TurtleBot is a low-cost, personal robot kit with open-source software. TurtleBot was created at Willow Garage by Melonee Wise and Tully Foote in November 2010. With TurtleBot, you'll be able to build a robot that can drive around your house, see in 3D, and have enough horsepower to create exciting applications.

The TurtleBot kit consists of a mobile base, 2D/3D distance sensor, laptop computer or SBC(Single Board Computer), and the TurtleBot mounting hardware kit. In addition to the TurtleBot kit, users can download the TurtleBot SDK from the ROS wiki. TurtleBot is designed to be easy to buy, build, and assemble, using off the shelf consumer products and parts that easily can be created from standard materials. As an entry level mobile robotics platform, TurtleBot has many of the same capabilities of the company's larger robotics platforms, like PR2.

For more information about hardware and software, please see: <http://www.turtlebot.com>



[turtlebot/](#) [Tutorials/](#) [indigo/](#) Turtlebot Installation

Note: This tutorial assumes that you have completed the previous tutorials: [Interacting with your Turtlebot](#).

⚠ Please ask about problems and questions regarding this tutorial on [answers.ros.org](#). Don't forget to include in your question the link to this page, the versions of your OS & ROS, and also add appropriate tags.

Turtlebot Installation

Description: Installing software onto the turtlebot.

Keywords: turtlebot installation

Tutorial Level: BEGINNER

Next Tutorial: [PC Installation](#)

Contents

- 1. Installation Types
 - 1. ISO Installation
 - 1. Download ISO & Create Startup USB
 - 2. Install Ubuntu with TurtleBot ISO
 - 2. Debs Installation
 - 1. Ubuntu Repo Setup
 - 2. Ubuntu Package Install
 - 3. Source Installation
 - 1. Preparation
 - 2. Workspaces
 - 4. Troubleshooting
- 2. Post Installation
 - 1. Environment variables
 - 2. Base-Specific Instructions
 - 3. Alternative Hardware Options
 - 4. Conveniences
- 3. What Next?

ROS 2 Documentation

The ROS Wiki is for ROS 1. Are you using ROS 2 (Dashing/Foxy/Rolling)? [Check out the ROS 2 Documentation](#)

Wiki

- [Distributions](#)
- [ROS/Installation](#)
- [ROS/Tutorials](#)
- [RecentChanges](#)
- [Turtlebot Installation](#)

Page

- [Immutable Page](#)
- [Info](#)
- [Attachments](#)

More Actions:

-
-

User

- [Login](#)

[turtlebot_gazebo/ Tutorials/ indigo/ Gazebo Bringup Guide](#)

Note: This tutorial assumes that you have completed the previous tutorials: [TurtleBot Installation](#).

💡 Please ask about problems and questions regarding this tutorial on [answers.ros.org](#). Don't forget to include in your question the link to this page, the versions of your OS & ROS, and also add appropriate tags.

Gazebo Bringup Guide

Description: See the simulated turtlebot in Gazebo.

Keywords: gazebo, simulator

Tutorial Level: BEGINNER

Next Tutorial: [Explore the Gazebo world](#)

Bringup Turtlebot.

Contents

- [1. Overview](#)
- [2. Execution](#)
- [3. Notes](#)
- [4. What Next?](#)

1. Overview

In this tutorial, we will bring up the turtlebot in the Gazebo simulator. This tutorial assumes you have completed [TurtleBot Installation](#).

2. Execution

The following command starts the turtlebot in the simulated world

```
$ roslaunch turtlebot_gazebo turtlebot_world.launch
```

ROS 2 Documentation

The ROS Wiki is for ROS 1. Are you using ROS 2 (Dashing/Foxy/Rolling)? [Check out the ROS 2 Documentation](#)

Wiki

- [Distributions](#)
- [ROS/Installation](#)
- [ROS/Tutorials](#)
- [RecentChanges](#)
- [Gazebo Bringup Guide](#)

Page

- [Immutable Page](#)
- [Info](#)
- [Attachments](#)

More Actions:

- [Raw Text](#)
- [Do](#)

User

- [Login](#)

even more complex...

Robots/ REEM-C/ Tutorials

1. Tutorials Installation

- [Installing Ubuntu with ROS](#)
This tutorial describes the steps needed to get a proper Ubuntu and ROS installation to have a system up and running for the REEM-C tutorials.
- [Installing REEM-C Simulation](#)
A brief summary of commands to install the required packages for REEM-C simulation



2. Tutorials

- [Launching a REEM-C Gazebo simulation](#)
This tutorial describes how to open a Gazebo simulation for the REEM-C robot.
- [Play pre-recorded motions on REEM-C](#)
This tutorial will show you how to play pre-recorded motions on the REEM-C robot.
- [Use MoveIt! with REEM-C](#)
This tutorial will show you how to play with Move It ! with the REEM-C robot.

Create a new tutorial:

ROS 2 Documentation

The ROS Wiki is for ROS 1. Are you using ROS 2 (Dashing/Foxy/Rolling)?
[Check out the ROS 2 Documentation](#)

Wiki

- [Distributions](#)
- [ROS/Installation](#)
- [ROS/Tutorials](#)
- [RecentChanges](#)
- [Robots/REEM-C/Tutorials](#)

Page

- [Immutable Page](#)
- [Info](#)
- [Attachments](#)

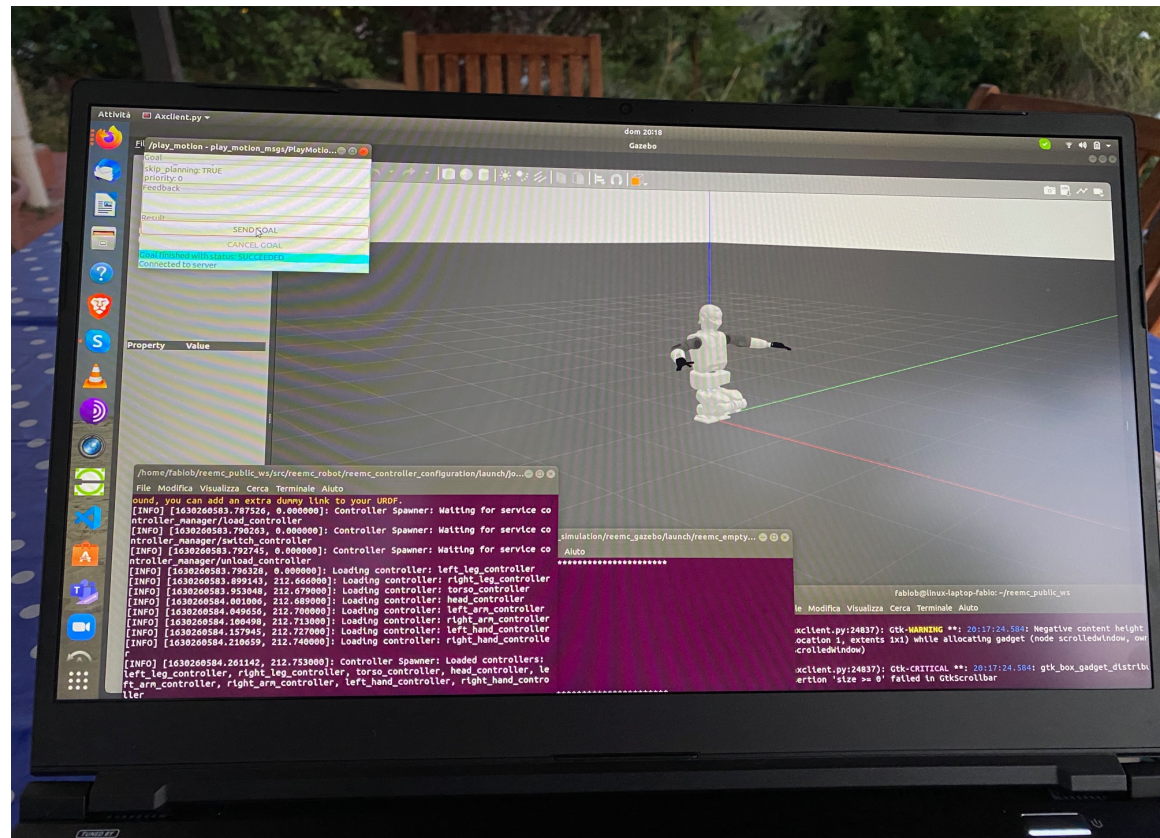
More Actions:

User

[Login](#)

even more complex...

<http://wiki.ros.org/Robots/REEM-C/Tutorials>



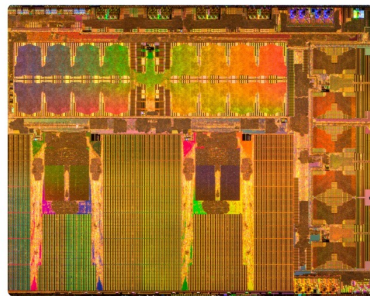
The most? complex...

T E S L A

Model S Model 3 Model X Model Y Solar Roof Solar Panels

Artificial Intelligence & Autopilot

We develop and deploy autonomy at scale in vehicles, robots and more. We believe that an approach based on advanced AI for vision and planning, supported by efficient use of inference hardware, is the only way to achieve a general solution for full self-driving and beyond.



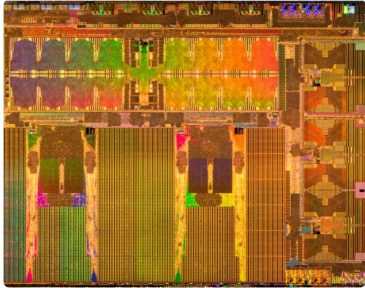
Hardware

Build silicon chips that power our full self-driving software from the ground up, taking every small architectural and micro-architectural improvement into account while pushing hard to squeeze maximum silicon performance-per-watt. Perform floor-planning, timing and power analyses on the design. Write robust, randomized tests and scoreboards to verify functionality and performance. Implement compilers and drivers to program and communicate with the chip, with a strong focus on performance optimization and power savings. Finally, validate the silicon chip and bring it to mass production.



Neural Networks

Apply cutting-edge research to train deep neural networks on problems ranging from perception to control. Our per-camera networks analyze raw images to perform semantic segmentation, object detection and monocular depth estimation. Our birds-eye-view networks take video from all cameras to output the road layout, static infrastructure and 3D objects directly in the top-down view. Our networks learn from the most complicated and diverse scenarios in the world, iteratively sourced from our fleet of nearly 1M vehicles in real time. A full build of Autopilot neural networks involves 48 networks that take 70,000 GPU hours to train 🔥. Together, they output 1,000 distinct tensors (predictions) at each timestep.



Hardware

Build silicon chips that power our full self-driving software from the ground up, taking every small architectural and micro-architectural improvement into account while pushing hard to squeeze maximum silicon performance-per-watt. Perform floor-planning, timing and power analyses on the design. Write robust, randomized tests and scoreboards to verify functionality and performance. Implement compilers and drivers to program and communicate with the chip, with a strong focus on performance optimization and power savings. Finally, validate the silicon chip and bring it to mass production.



Neural Networks

Apply cutting-edge research to train deep neural networks on problems ranging from perception to control. Our per-camera networks analyze raw images to perform semantic segmentation, object detection and monocular depth estimation. Our birds-eye-view networks take video from all cameras to output the road layout, static infrastructure and 3D objects directly in the top-down view. Our networks learn from the most complicated and diverse scenarios in the world, iteratively sourced from our fleet of nearly 1M vehicles in real time. A full build of Autopilot neural networks involves 48 networks that take 70,000 GPU hours to train 🔥. Together, they output 1,000 distinct tensors (predictions) at each timestep.



Autonomy Algorithms

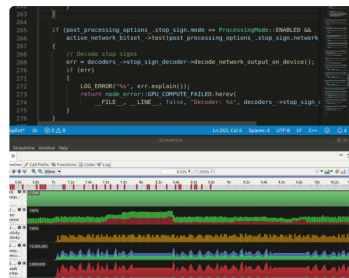
Develop the core algorithms that drive the car by creating a high-fidelity representation of the world and planning trajectories in that space. In order to train the neural networks to predict such representations, algorithmically create accurate and large-scale ground truth data by combining information from the car's sensors across space and time. Use state-of-the-art techniques to build a robust planning and decision-making system that operates in complicated real-world situations under uncertainty. Evaluate your algorithms at the scale of the entire Tesla fleet.

The most? complex...



Autonomy Algorithms

Develop the core algorithms that drive the car by creating a high-fidelity representation of the world and planning trajectories in that space. In order to train the neural networks to predict such representations, algorithmically create accurate and large-scale ground truth data by combining information from the car's sensors across space and time. Use state-of-the-art techniques to build a robust planning and decision-making system that operates in complicated real-world situations under uncertainty. Evaluate your algorithms at the scale of the entire Tesla fleet.



Code Foundations

Throughput, latency, correctness and determinism are the main metrics we optimize our code for. Build the Autopilot software foundations up from the lowest levels of the stack, tightly integrating with our custom hardware. Implement super-reliable bootloaders with support for over-the-air updates and bring up customized Linux kernels. Write fast, memory-efficient low-level code to capture high-frequency, high-volume data from our sensors, and to share it with multiple consumer processes— without impacting central memory access latency or starving critical functional code from CPU cycles. Squeeze and pipeline compute across a variety of hardware processing units, distributed across multiple system-on-chips.



Evaluation Infrastructure

Build open- and closed-loop, hardware-in-the-loop evaluation tools and infrastructure at scale, to accelerate the pace of innovation, track performance improvements and prevent regressions. Leverage anonymized characteristic clips from our fleet and integrate them into large suites of test cases. Write code simulating our real-world environment, producing highly realistic graphics and other sensor data that feed our Autopilot software for live debugging or automated testing.

The most? complex...(so far, IFF 😊)



Tesla Bot

Develop the next generation of automation, including a general purpose, bi-pedal, humanoid robot capable of performing tasks that are unsafe, repetitive or boring. We're seeking mechanical, electrical, controls and software engineers to help us leverage our AI expertise beyond our vehicle fleet.



DRC partial vindication? :-) ANA Avatar XPRIZE



NimbRo Team University of Bonn

Today's topics

- Practical Robotics in 2022
- **The classical approach: Cognition as computation**
- Successes and failures of the classical approach
- Some problems of the classical approach
- The need for an embodied approach

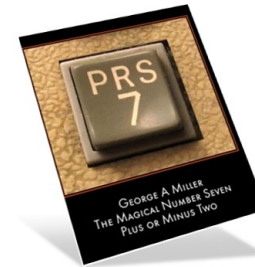
“Birth” of AI, 1956 Meeting at Dartmouth College, Hanover, New Hampshire

1 September 1955: a proposal for a “2 month, 10 man study of artificial intelligence” gave birth to a word that would define a field set on forever changin



Herbert Simon
and Allen Newell
The “Logic Theorist”

Noam Chomsky,
Linguist
“Syntactic Structures”



George A. Miller, Psychologist
“The Magical Number Seven Plus or Minus
Two”

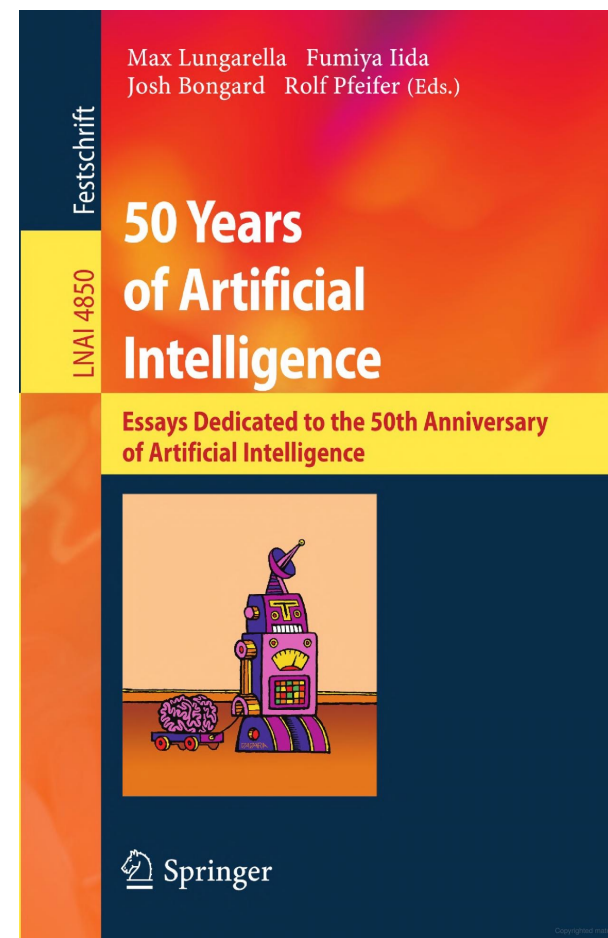
John McCarthy, Computer Scientist
Initiator of Artificial Intelligence



50 Years later, 2006 Meeting on Monte Verità, Ascona, Switzerland

Information Theory and Quantification

On the Information Theoretic Implications of Embodiment – Principles and Methods	76
<i>Rolf Pfeifer, Max Lungarella, Olaf Sporns, and Yasuo Kuniyoshi</i>	
Development Via Information Self-structuring of Sensorimotor Experience and Interaction	87
<i>Chrystopher L. Nehaniv, Naeem Assif Mirza, and Lars Olsson</i>	
How Information and Embodiment Shape Intelligent Information Processing	99
<i>Daniel Polani, Olaf Sporns, and Max Lungarella</i>	
Preliminary Considerations for a Quantitative Theory of Networked Embodied Intelligence	112
<i>Fabio P. Bonsignorio</i>	



50 Years later, 2006 Meeting on Monte Verità, Ascona, Switzerland

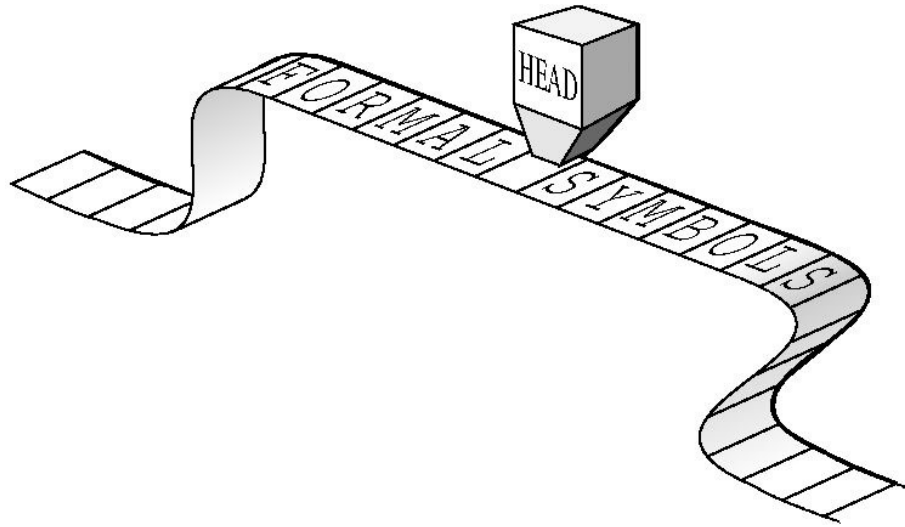
Monte Verità: "il luogo dove la nostra fronte sfiora il cielo..."

Nel diciannovesimo secolo e nei primi anni del ventesimo secolo il Ticino, repubblica e cantone dal 1803, diventò un passaggio verso sud e destinazione privilegiata di un gruppo di solitari anticonvenzionali, i quali trovarono nella regione, con la sua atmosfera meridionale, terreno fertile in cui piantare quei semi dell'utopia che non erano riusciti a coltivare a nord.

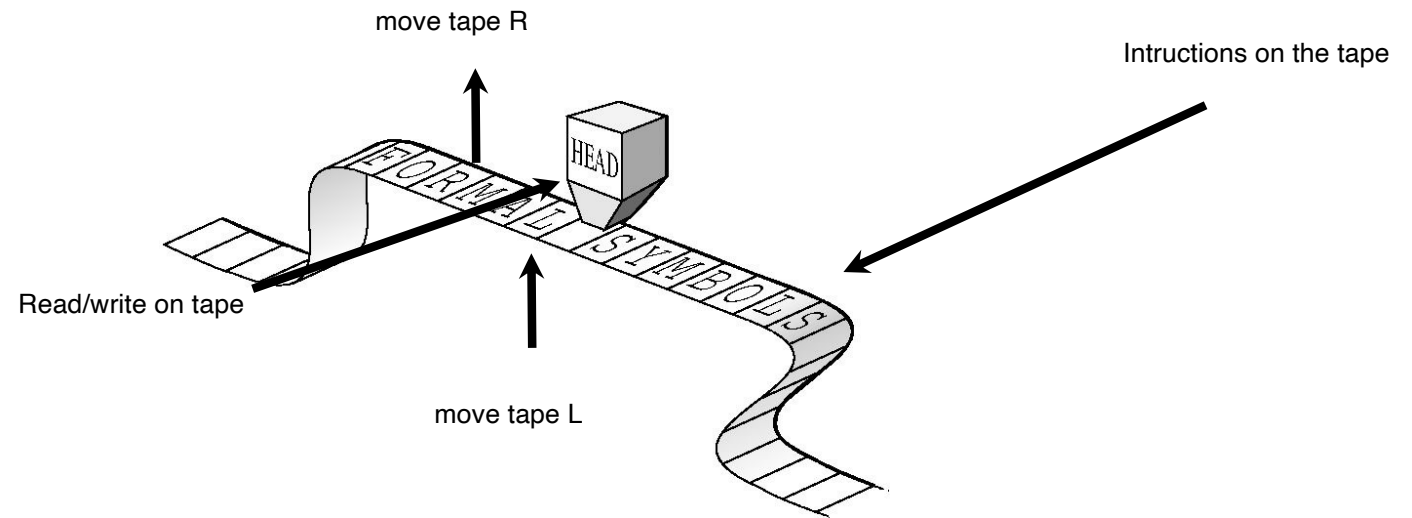
Il Ticino venne a rappresentare l'antitesi del nord urbanizzato e industrializzato, un santuario per qualsiasi tipo di idealista. Dal 1900 in poi il monte Monescia sopra Ascona diventò un polo di attrazione per chi cercava una vita "alternativa". Questi riformatori, i quali cercavano una terza via tra il blocco capitalista e quello comunista, finirono col trovare casa nella regione.



Turing Machine (1)



Turing Machine (2)



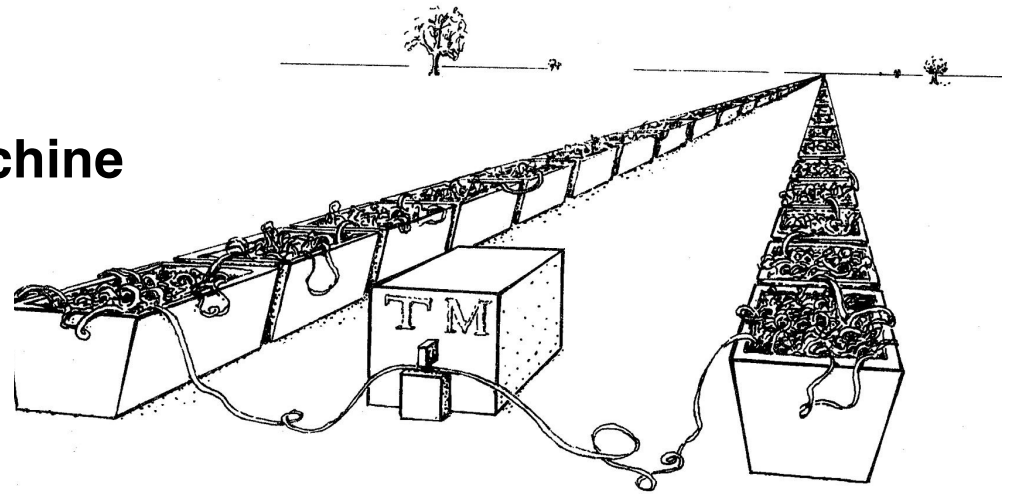
input from tape	1	2	state of read/write head
_	_R2	HALT	
A	AL1	BR2	
B	BL1	AR2	
C	CL1	CH2	

The Universal Turing Machine

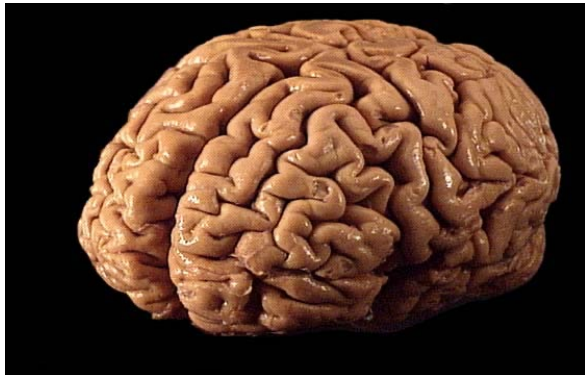
Turing Machine (5)

an “embodied” Turing Machine

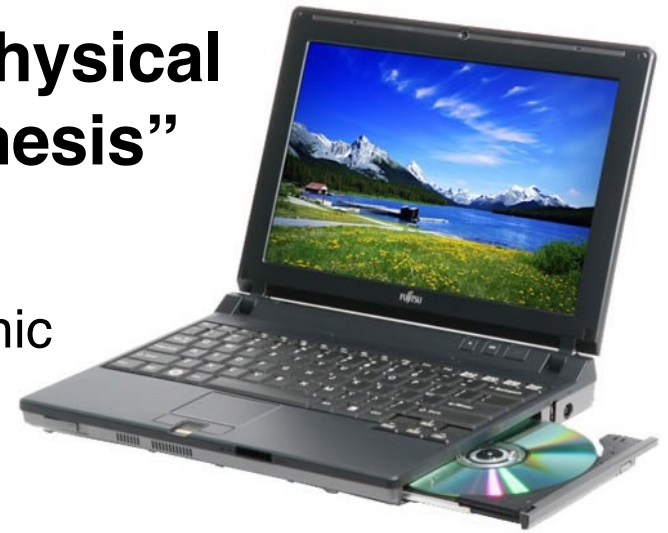
**Cartoon by
Roger Penrose**



Functionalism and the “Physical Symbol Systems Hypothesis”



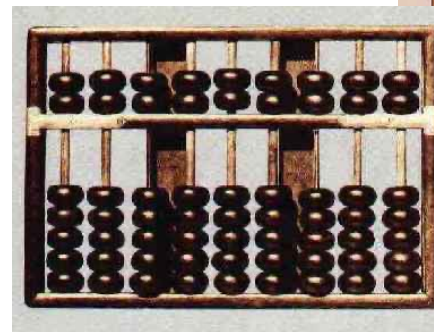
biological



electronic



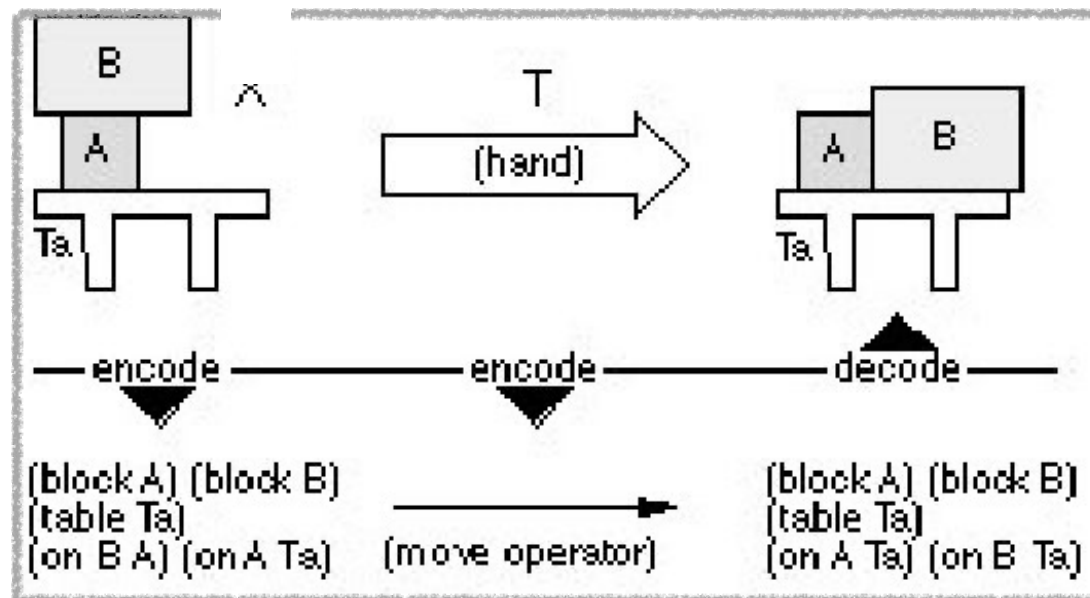
Swiss cheese
Hilary Putnam
(American
Philosopher)



mechanical

Functionalism and the “Physical Symbol Systems” Hypothesis

Model/Representation:



GOFAI

G

O

F

A

I

(John Haugeland, Philosopher)

Classical AI: Research areas

- **problem solving**
- **knowledge representation and reasoning**
- **acting logically**
- **uncertain knowledge and reasoning**
- **learning and memory**
- **communicating, perceiving and acting**
- (adapted from Russell/Norvig: Artificial intelligence, a modern approach)

Today's topics

- Practical Robotics in 2022
- The classical approach: Cognition as computation
- **Successes and failures of the classical approach**
- Some problems of the classical approach
- The need for an embodied approach
- The “frame-of-reference” problem

Classical AI: Successes

- **search engines**
- **formal games (chess!)**
- **text processing systems/translation**
- **data mining systems**
- **restricted natural language systems**
- **appliances**
- **manufacturing**
- **control systems**

Chess: New York, 1997



1 win

3 draws

2 wins

Classical AI: Failures

- **recognizing a face in the crowd**
- **vision/perception in the real world**
- **common sense**
- **movement, manipulation of objects**
- **walking, running, swimming, flying**
- **speech (everyday natural language)**

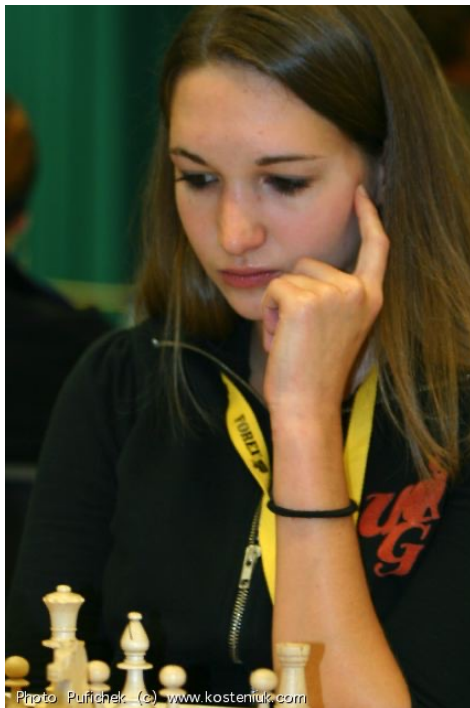
Why is perception hard?

Today's topics

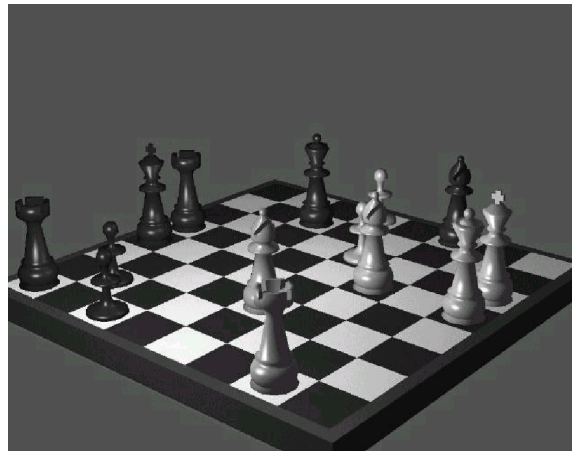
- Practical Robotics in 2022
- The classical approach: Cognition as computation
- Successes and failures of the classical approach
- **Some problems of the classical approach**
- The need for an embodied approach

Fundamental problems of the classical approach

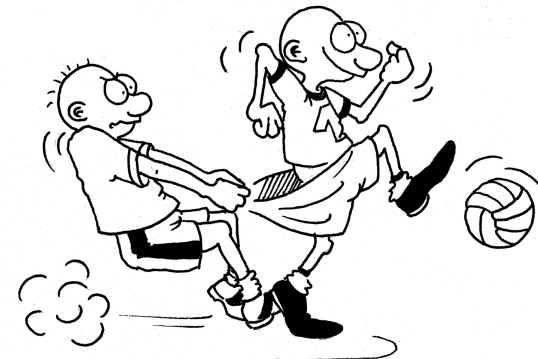
Monika Seps, chess master
former master student
AI Lab, Zurich



virtual, formal world



real world



Differences real vs. virtual worlds

Successes and failures of the classical approach

Successes

applications (e.g. Google)

chess

manufacturing

(applications: “controlled” artificial worlds)

Failures

foundations of behavior

natural forms of intelligence

interaction with real world

(scientific: “real worlds”)

Industrial environments vs. real world

industrial
environments

**environment
well-known**

little uncertainty

predictability

("controlled" artificial
worlds)

real world
environment

**limited knowledge and
predictability**

rapidly changing

**high-level of
uncertainty**

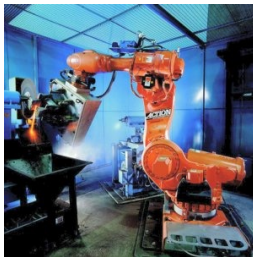
("real" worlds)

Industrial robots vs. natural systems

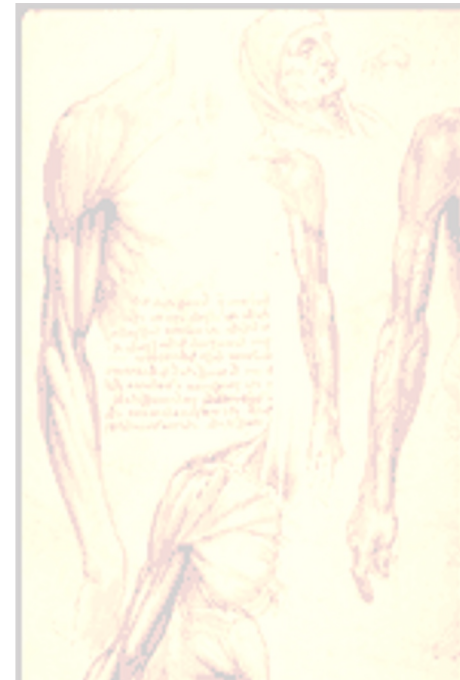


principles:

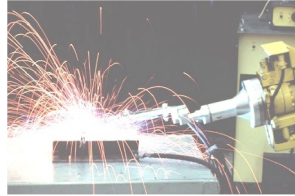
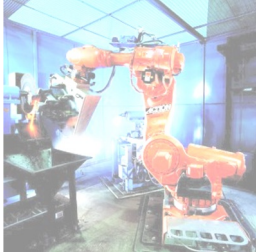
- strong, precise, fast motors
- centralized control
- computing power
- optimization



Industrial robots



Industrial robots vs. natural systems



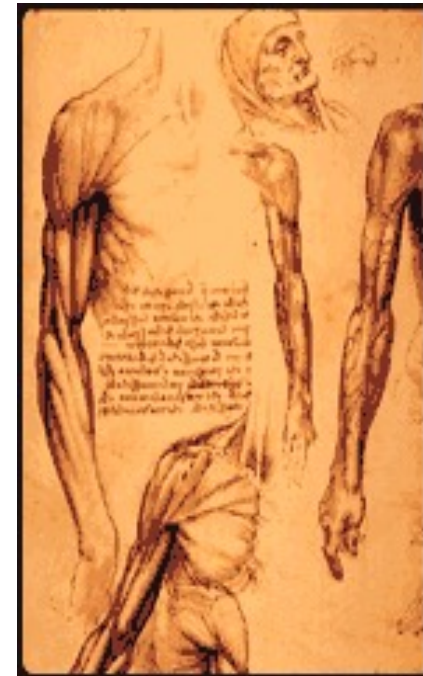
principles:

- low precision
- compliant
- reactive
- coping with uncertainty

no direct transfer of methods



humans

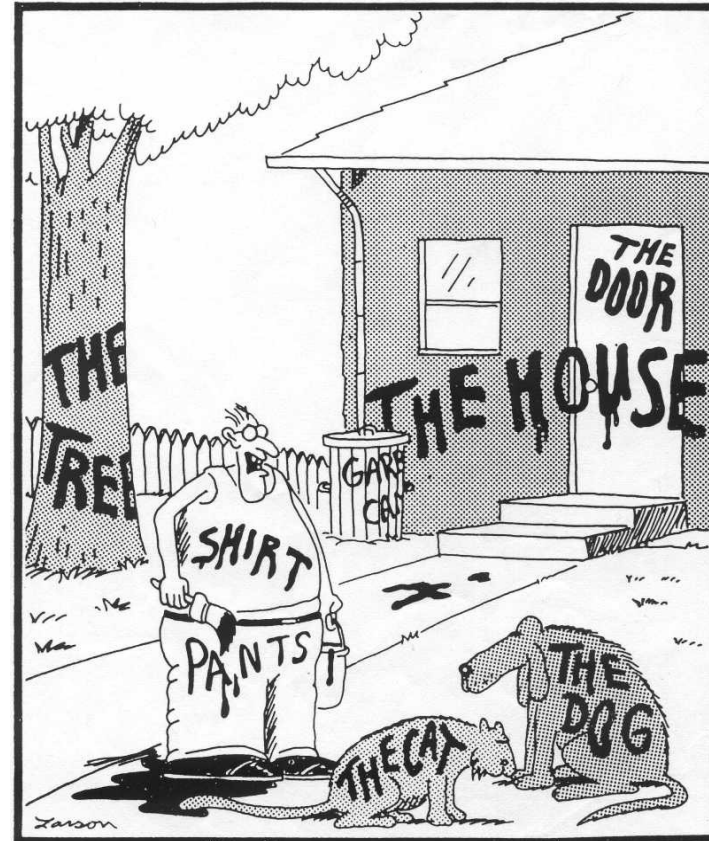


Fundamental problems of classical approach

- **“symbol grounding problem”**
- **“frame problem”**
- **“homunculus problem”**

The “symbol grounding” problem

real world:
doesn't come
with labels ...



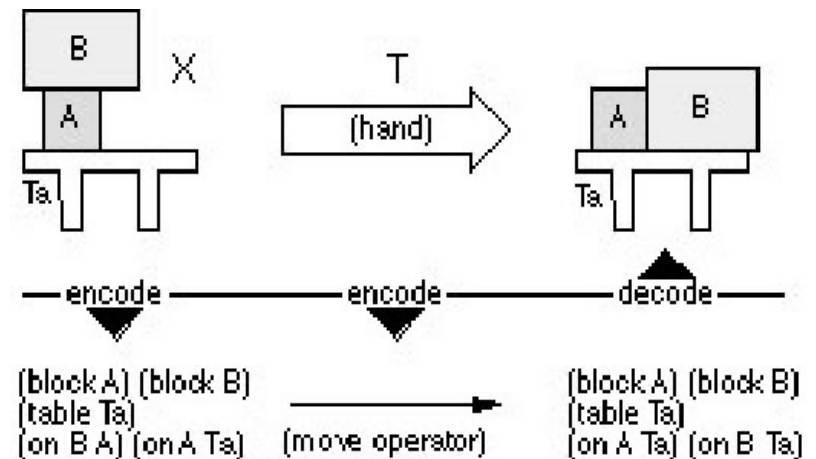
"Now! ... *That* should clear up
a few things around here!"

Gary Larson

The “frame problem”

Maintaining model of real world

- the more detailed
the harder
- information
acquisition
- most changes:
irrelevant to current
situation



Today's topics

- Practical Robotics in 2022
- The classical approach: Cognition as computation
- Successes and failures of the classical approach
- Some problems of the classical approach
- **The need for an embodied approach**

Two views of intelligence

classical:
**cognition as
computation**



embodiment:
**cognition emergent from
sensory-motor and
interaction processes**



The need for an embodied perspective

- **“failures” of classical AI**
- **fundamental problems of classical approach**
- **Wolpert’s quote:**

The need for an embodied perspective

“Why do plants not have brains?”

The need for an embodied perspective

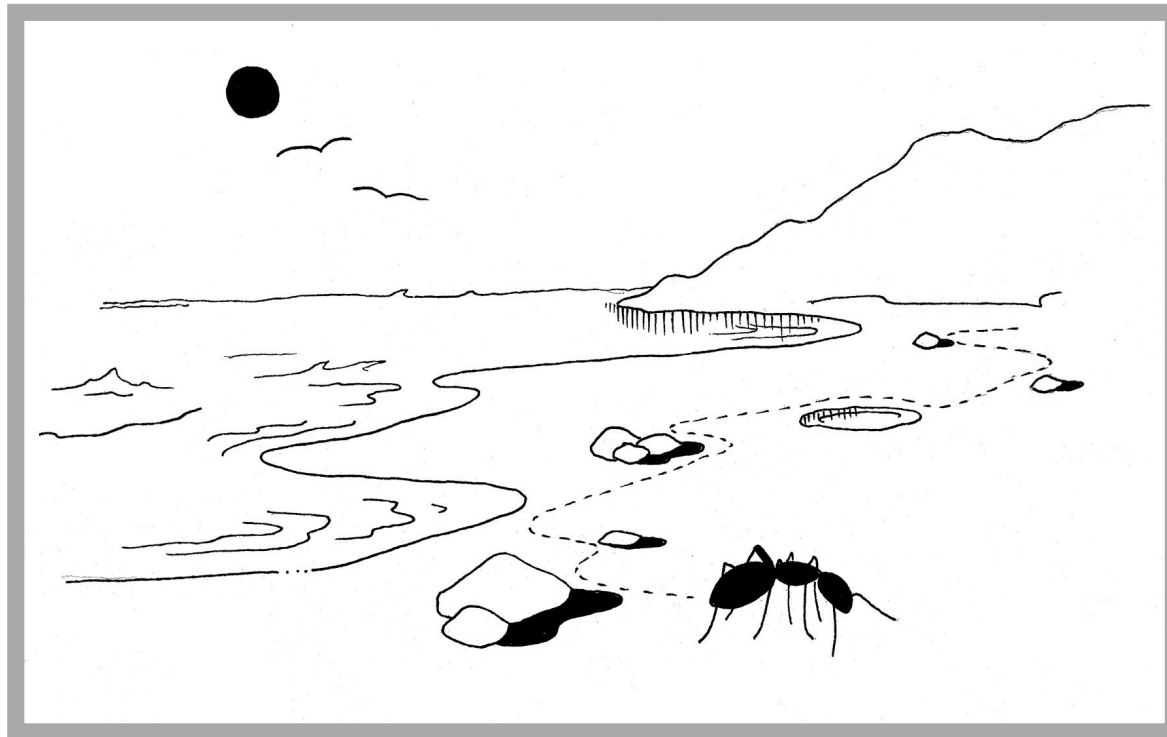
“Why do plants not have brains?”

The answer is actually quite simple — they don't have to move.” Lewis Wolpert, UCL

The need for an embodied perspective

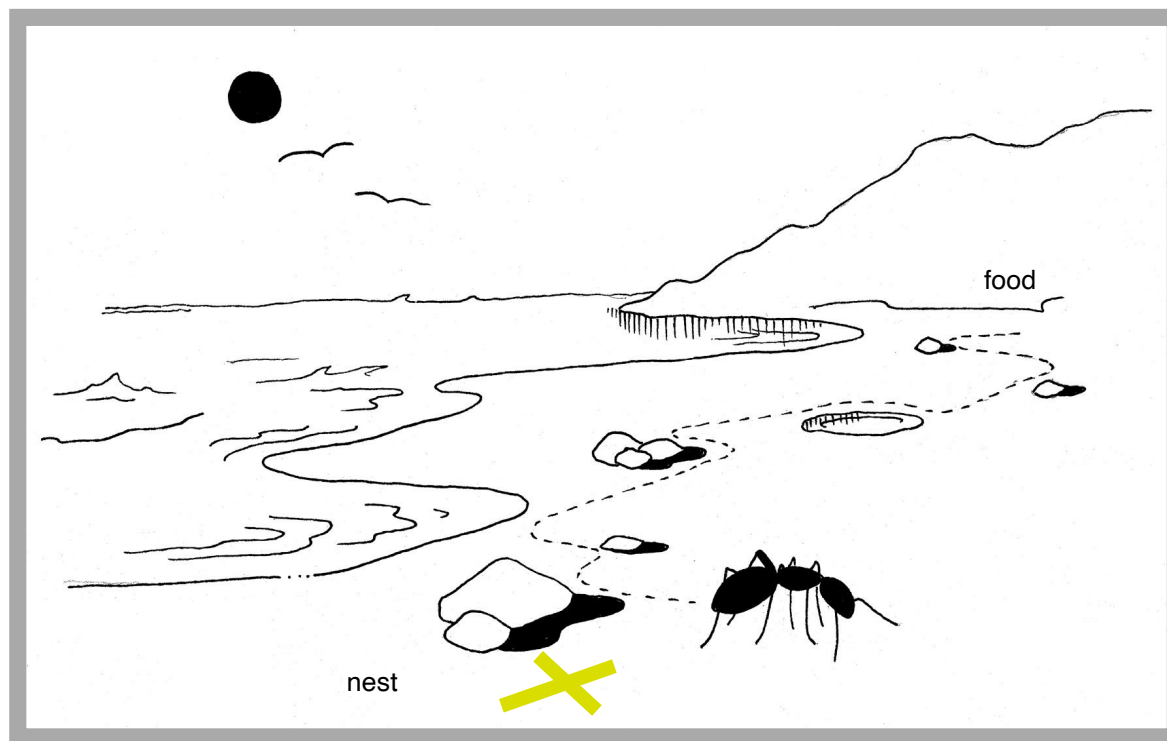
- **“failures” of classical AI**
- **fundamental problems of classical approach**
- **Wolpert’s quote: Why do plants not ...?**
- **Interaction with environment: always mediated by body**

“Frame-of-reference” Simon’s ant on the beach



“Frame-of-reference”

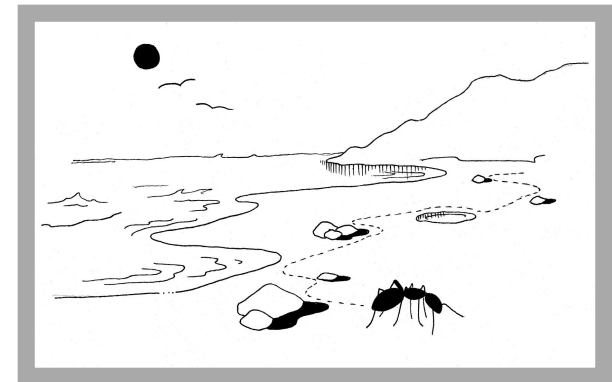
Simon’s ant on the beach



“Frame-of-reference”

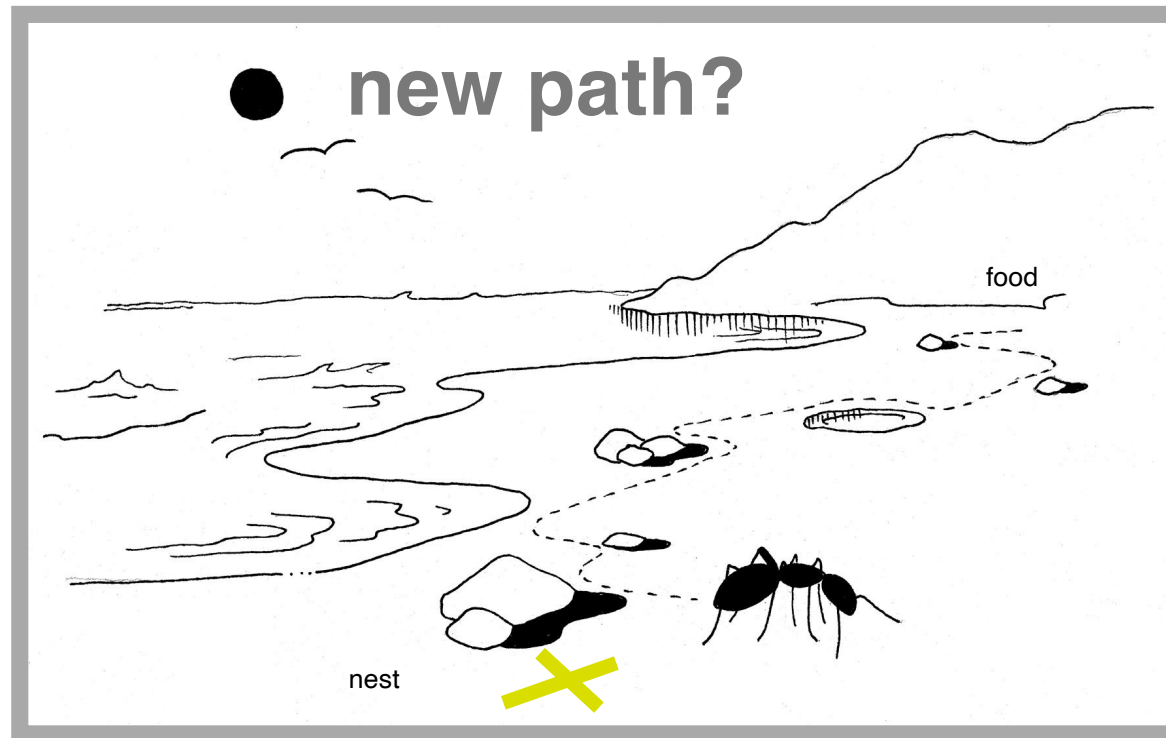
Simon’s ant on the beach

- **simple behavioral rules**
- **complexity in interaction,
not — necessarily — in brain**
- **thought experiment:
increase body by factor of 1000
everything else the same**



“Frame-of-reference”

Simon’s ant on the beach



“Frame-of-reference”

F-O-R

- **perspectives issue**
- **behavior vs. mechanism issue**
- **complexity issue**

Intelligence: Hard to agree on definitions, arguments

- **necessary and sufficient conditions?**
- **are robots, ants, humans intelligent?**

more productive question:

“Given a behavior of interest, how to implement it?”

does it come about?”

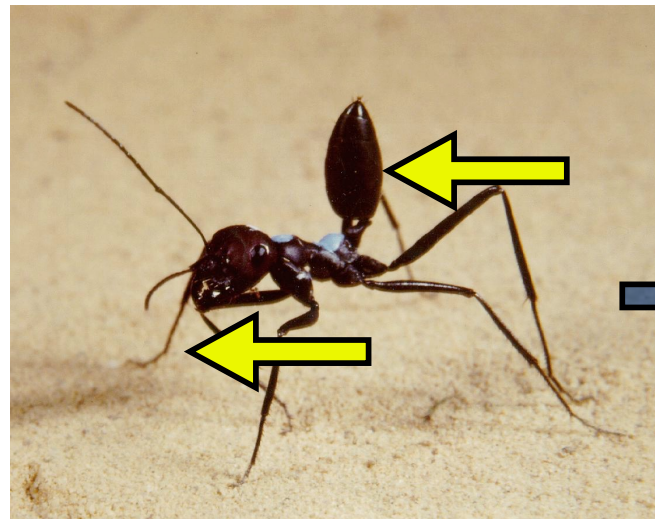
Communication through interaction with environment

exploitation of interaction with
environment

angle sensors
in joints

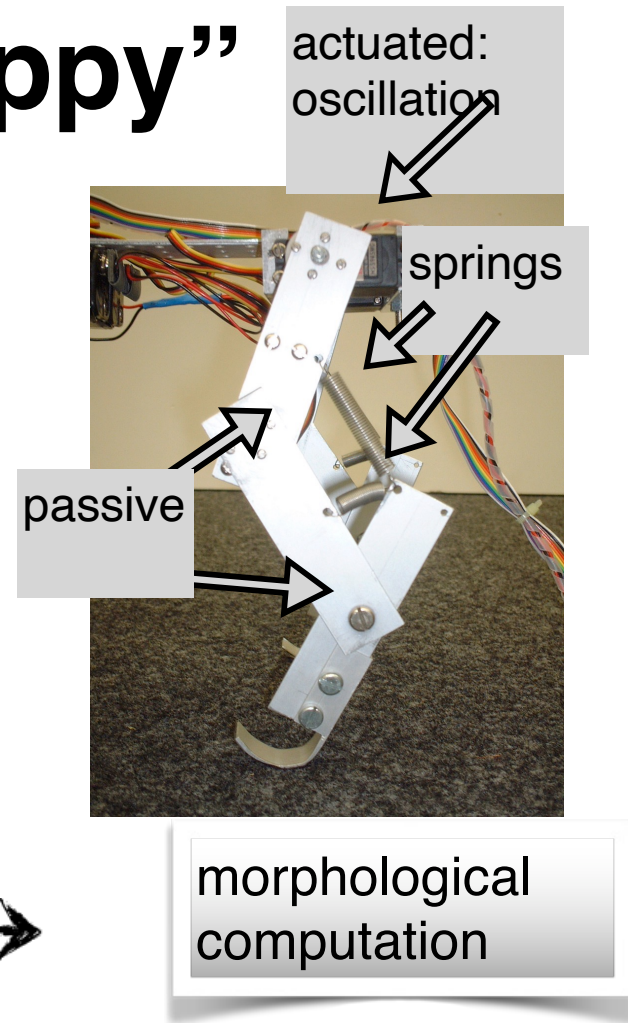


simpler neural circuits



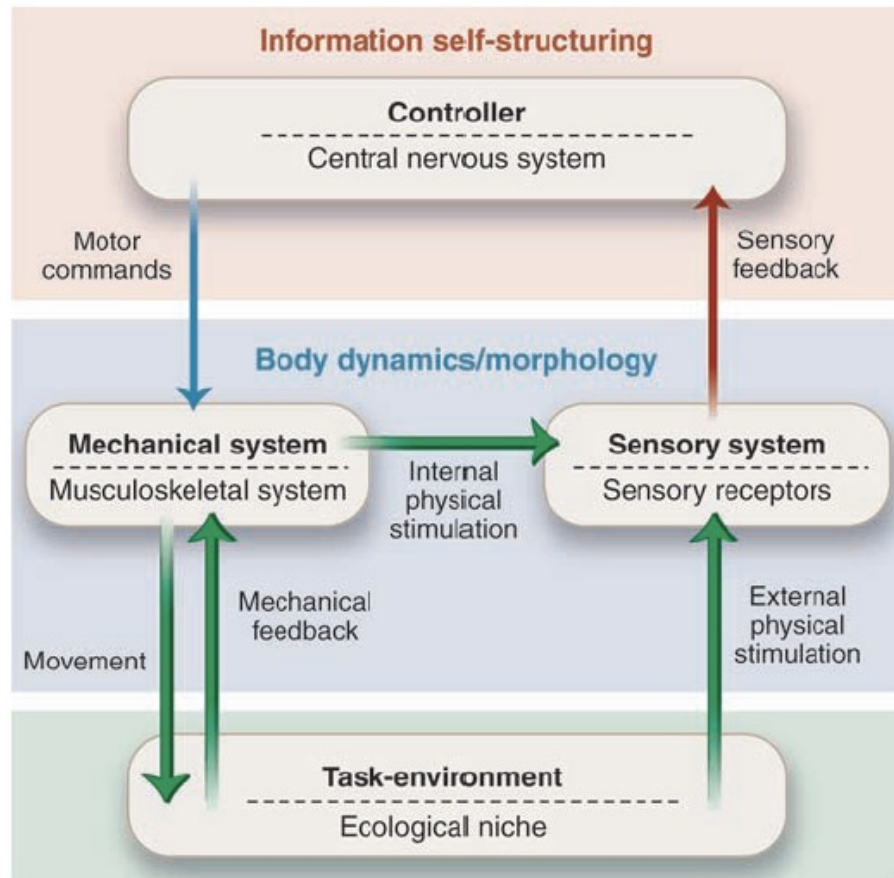
Emergence of behavior: the quadruped “Puppy”

- simple control (oscillations of “hip” joints)
- spring-like material properties (“under-actuated” system)
- self-stabilization, no sensors
- “outsourcing” of functionality



Implications of embodiment

Self-stabilization



“Puppy”, but...
also Cruse’s Ants!!!

Pfeifer et al., Science,
16 Nov. 2007

Today's Guest Lecture

10:10 CET Enrica Zereik, CNR-INM and Heron@CNR Joint Lab, Genoa, Italy

**«Controlling 'uncontrollable' stuff:
Playing with the H2Arm»**

Stay tuned!



End of lecture 2

Thank you for your attention!

stay tuned for lecture 3

**“Emerging Intelligence:
Embodiment, Cognition from
Interaction, Development and
Evolution**



Short Bio

The ShanghAI Lectures 2013-



Prof. Fabio Bonsignorio is **ERA Chair in AI for Robotics** at FER, University of Zagreb, Croatia. He is **Founder and CEO of Heron Robots (advanced robotics solutions)**, see www.heronrobots.com. He has been visiting professor at the **Biorobotic Institute of the Scuola Superiore Sant'Anna in Pisa from 2014 to 2019**. He has been a professor in the Department of System Engineering and Automation at the **University Carlos III of Madrid until 2014**. In 2009 he got the **Santander Chair of Excellence in Robotics** at the same university. alla stessa università. He has been working for some 20 years in the high tech industry before joining the research community.

He is a **pioneer and has introduced the topic of Reproducibility of results in Robotics and AI**. He is a **pioneer in the application of the blockchain to robotics and IA (smart cities, smart land, smart logistics, circular economy**. He coordinates **Topic Group of euRobotics about Experiment Replication, Benchmarking, Challenges and Competitions**. He is **co-chair IEEE Robotics & Automation Society (RAS) Technical Committee, TC-PEBRAS (Performance and Benchmarking of Robotics and Autonomous Systems)**.

He is **Distinguished Lecturer per la IEEE Robotics and Automation Society.** Senior Member of IEEE e member of the Order of the Engineers of Genoa, Italy.

He coordinates the task force robotics, in the G2net, an EU network studying the application of **Machine Learning and Deep Learning (Apprendimento Profondo) to Gravitational wave research, la Geophysics and Robotics**.

Has given invited seminars and talks in many places: **MIT Media Lab, Max Planck Institute, Imperial College, Politecnico di Milano in Shenzhen, London, Madrid, Warsaw, San Petersburg, Seoul, Rio Grande do Sul....**

Thank you!

fabio.bonsignorio@fer.hr
fabio.bonsignorio@heronrobots.com
fabio.bonsignorio@gmail.com



University of Zagreb
Faculty of Electrical Engineering and Computing
Laboratory for Autonomous Systems and Mobile Robotics



This project has received funding from the European Union's Horizon 2020 research and innovation programme under the Grant Agreement No. 952275



www.heronrobots.com